



SHIP TO SHORE



Caring for Seafarers in Victorian Ports since 1858

Winter Edition 2009

Workplace Bullying

Worksafe Victoria describes *bullying* as “repeated, unreasonable behaviour directed to an employee or group of employees that creates a risk to health and safety.” Annual research consistently shows 14 per cent of Victorian workers experienced bullying. When writing this article we were unable to find current statistics pertaining to seafaring and workplace bullying, yet we know the issue is alive and well at sea.

Some of our readers may recall foreign ships being diverted from Australia to avoid the back pay blitz back in 2002. The blitz on foreign ships trading in Australian waters won \$280,000 in back pay for seafarers, plus wage rises for up to 1,000 underpaid crew.

Seven years later the problem continues with Flag of Convenience ships employing low-wage foreign crews, who are more easily disadvantaged. Melbourne Port Chaplain, Ken



Cahill reported a recent incident where crew had been signing two wages books, reducing the wages by some US\$14,000 per month. In consultation with the crew it was agreed to notify the ITF and this crew, from a Hong Kong registered ship, received US\$50,000 back pay. Panama, the largest flag State in the world, with nearly 25 per cent of the world’s merchant fleet flying its flag, is the fourth major shipping country in the world to ratify the Convention, adopted by the 94th International Labour Conference (Maritime) in Geneva in February 2006.

Only a small number of additional ILO member countries need to support the convention, to be implemented in 2010, and we urge the Australian Federal Government to do so. This convention will ensure better working conditions, safety and sustainability for seafarers throughout the world.



July 12th Sea Sunday Appeal

The Sea Sunday Appeal raises vital funding for the MTSV. Please consider carefully your support for seafarers’ welfare, touching lives and contributing to a vital service of care within the global shipping community. We rely on the generosity of the shipping industry and Anglican Church community and all of our donors. Special thanks to the Melbourne Port Corporation for its sponsorship of the 2009 Sea Sunday Appeal. Please contact Andrea Fleming or The Reverend Ken Cahill to find out what you can do to help.

Chairman's Message

Our Annual General Meeting on May 19th was followed by the meeting of State Council seeing the appointment of Andrea Fleming as the Chief Executive Officer for the Mission to Seafarers in Victoria.

With the Joint Venture Facility project underway there is much work to accomplish in the community, shipping sector and in our relationship with other welfare providers. Andrea has her work cut out and is admirably suited to the tasks.

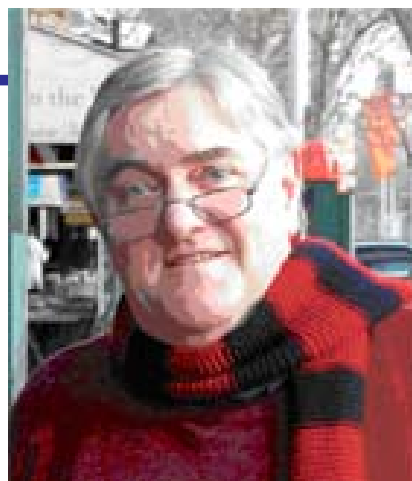
The year is moving along quickly with increasing demands for each of our Victorian port facilities. The global economic crisis has impacted largely on our operations seeing declining contributions from the corporate sector. We are thankful to our Pledge Partners and donors who

have continued their support during these challenging times.

As the demand for ship visiting increases in the Ports we are further relying on our volunteers as they contribute longer hours in the Flying Angel Clubs enabling Port Chaplains to undertake increased ship visiting hours. All of this makes our appeal more important. Sea Sunday occurs on 12th July and we encourage your support and prayer for the work of the Mission to Seafarers.

Preparations are well underway for the annual ANL Maritime Art Prize & Exhibition, opening on 8th October this year. A visit to the Melbourne centre during the exhibit is a richly rewarding experience and we look forward to welcoming you.

The Mission to Seafarers is a Christian welfare agency dedicated



to seafarers' welfare. It is interesting that for so many years this service has been the ongoing concern of Christian not-for-profit organisations.

We have a great legacy to continue in this work and look forward to your continued support.

*Andrew Oddy
Chairman*

2009 ANL Maritime Art Prize & Exhibition 8th – 25th October

Now in its 7th year, the ANL Art Prize and Exhibition is calling for 2009 entrants.

We are grateful to John Lines at ANL for continuing the Naming Rights sponsorship this year and we are sad to lose Wallenius Wilhelmsen Logistics (WWL) as the People's Choice Award sponsor. Special thanks to Kevin Moore previously of WWL and a valued supporter of the MTSV.

The \$15,000 first prize award will be judged this year by Australian Artist Andrew Sibley and Artist and Creative Director Ron Mather. Robert Carter President, Australian Society Maritime Artists will judge the \$5,000 'Best in Traditional Award' and Jacqueline Taylor OAM will curate the exhibit.

Special thanks to artist Joni Dennis who exhibited her work *Big Fog* in 2008. Joni later donated the painting which raised \$1,850 at a luncheon hosted by Shipping Australia with guest speaker the Hon. Tim Pallas. Joni has recently been commissioned in New York and we wish her all the best.

Artist entries close 4th September. Download entry form from the MTSV

website or contact the Melbourne centre.

Sponsorship starts at \$2,200 for a nationally promoted event supporting the arts and raising funds for seafarers' welfare.

Sponsorship is important and we are relying again this year on the support of the shipping industry. If we can confirm a few big sponsorships we are more likely to raise the profile of the award and attract other corporate sponsorship outside of shipping, we are ready to take this event to the next level so please consider being a sponsor of this leading maritime art award.

Eighth October is the Gala Opening Night. Event tickets are limited so book your ticket early, just \$25. For further



details regarding the art prize, sponsorship, opening night tickets and promotions contact:

marketing@missiontoseafarers.com.au

Thank you Expo Hire, and goodbye ...

Peter Mathews and the Expo Hire team contributed enormously to the growth and presentation of the Maritime Art Prize & Exhibition over the past 6 years. The Maritime Art Awards enrich the arts community and seafarers' welfare. We will dearly miss the sponsorship support which was to the value of \$18,000 annually covering our costs for exhibit walls and lighting. With the company being sold and operating its head office out of Sydney the new owners were not able to extend such generosity.

Getting the message across ...

Television campaign to spread the word

"Seafarers' Welfare Working to Ensure our Oceans and Coastlines are in Safe Hands", That's the message we hope to pass on when our television commercial goes to air mid-June to mid-July.

This initiative has come about with much goodwill and in kind support. Very special appreciation goes to James McCully, Advertising Alliance; David Stephens, Creative Director; Paul Green, Horizon Films; and our volunteers who have given their time and expertise.

The commercial was launched at an informal gathering celebrating with good friends.

Although we did not have a budget for the call 1300 number, we hope the MTSV website '[donate on line button](#)', goes into overload during the campaign!!

Rotary Club joins fight against depression

MTSV Vice Chairman Nigel Porteous has worked closely with Robert Iversen of the Rotary Club of Melbourne South, to develop a program in conjunction with *beyondblue* and the Melbourne Port Welfare Association (MPWA).

This innovative program will provide



Bob Iversen – Rotary Club Melbourne South.

Joint venture facility for seafarers' welfare

Further to the article in the December issue of *Ship to Shore* on the Joint Facility Venture for seafarer welfare service providers, the MTSV Melbourne Centre has been nominated as the site for the Joint Venture Facility. The announcement was made at the April meeting of the Melbourne Port Welfare Association (MPWA) and confirmed in a letter from the ITF to the State Minister for Roads, Ports & Major Projects The Honourable Tim Pallas.

MTSV representatives will work closely with other service providers and stakeholders as the early stages for planning and the logistics of the merger are determined.

multi-lingual literature and support to seafarers experiencing depression. The Mission is working with the MPWA and Rotary to support the program.

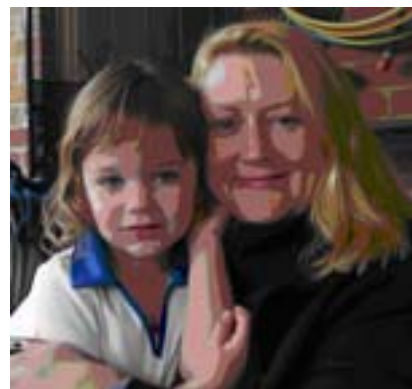
Ultimately seafarers' will benefit from the commitment of service providers to distribute this information to captains and crew via the Ship Visiting program.

The materials will assist seafarers to recognise signs of depression plus offering management tips and information regarding counselling.

The program is set to launch within 6-9 months, We will be updating you on progress via our website and Christmas '09 edition of *Ship to Shore*.

An extra set of hands and many skills...

Introducing Lynne Pike-Overall, the latest addition to the MTSV team. Lynne has predominantly worked in accounting, with her last major role being the Accounting Operations Manager, Accounts Payable, for National Australia Bank. Since the birth of her daughter Caitlyn, Lynne has decided to take a different direction in her career working just one day per week to assist primarily with event management and the MTSV's two major fund raisers, the ANL Art Prize & Sea Sunday Appeal, along with adhoc administrative duties thrown in for good measure! We welcome Lynne and are grateful of her support and enthusiasm. Lynne will work on Tuesdays and has been busy with preparations for Sea Sunday. Contact Lynne at the Melbourne Centre or via email: marketing@missiontoseafarers.com.au



Lynne and her daughter Caitlyn.

Long-time supporters of the MTSV

Lyn and Peter Kelly are long time supporters of the Mission to Seafarers Victoria.

Lyn chaired the 2007 ANL Art Prize Committee and Peter has been invaluable in more recent times as a volunteer driver at our Melbourne Centre.

The Kellys introduced serviced

apartments to Docklands in 2002 with *Docklands Serviced Apartments* and, after nearly 4 years, they are very excited about starting their new serviced apartment business, *Docklands Private Collection of Apartments*.

If you are planning a stay in Melbourne call Lyn on 0417 116 793 or Peter on 0417 581 455.

717 Flinders Street is the new home for *Maritime Corridor*, a concept of Captain Anton Andrado MICS.

Anton's vision is to see maritime academic initiatives become more accessible and affordable for prospective students and for further education to be more broadly encouraged within the shipping industry. *Maritime Corridor* will facilitate interactive training and education seminars and also encourages mentoring and networking opportunities for industry professionals.

Maritime Corridor is currently offering:

- ◆ Lloyds List Informa IIR Course – 'Shipping Ports Maritime' dates 17th-18th August 2009

- ◆ Information regarding the Linking Apprentices-Employers-RTO's through Apprenticeship Australia program www.appsmelbourne.com.au

- ◆ ICSUK / ICSANZ Business of Shipping Day Courses & Workshops

- ◆ www.ics.org.uk www.icsanz.com

ICS UK (Institute of Chartered Shipbrokers UK) has operated as a professional maritime body since 1911 and is highly regarded for its world class academic education programs.

It is fitting therefore that the local ICSANZ (Australia & New Zealand) branch will be offering industry specific training at the historic seafarers building, central to the CBD with good public transport and parking for those enrolling for further education.

ICSANZ DLC (Distance Learning Centre) based in Melbourne provides tutoring for the professional shipping qualifications; Advanced or Foundation Diplomas, at a fraction of the cost for Australian and New Zealand students compared with those studying the same in the United Kingdom.



'Maritime Corridor' – Opportunities for Industry Professionals

Following the success in the UK and Europe of the '*Business of Shipping*' seminar, ICSANZ is proud to bring this one-day seminar to Melbourne.

New entrants to the shipping industry as well as those already working in international trading or shipping companies, but who are not involved in the delivery of frontline shipping services, will benefit greatly.

The course will be hosted on Wednesday July 8th, August 26th and October 28th at the MTSV. The seminar costs \$500pp including course materials and catering. All tutors are accredited by ICS UK which also issues a certificate of attendance to each participant. Ten per cent of the course fee will be donated to contribute to the

work of the Mission to Seafarers Victoria. For further information regarding *Maritime Corridor* activities, Lloyds List Informa IIR or ICSANZ education courses contact Captain Anton Andrado: a.andrado@gmail.com

The MTSV congratulates the *Maritime Corridor* initiative combining education, networking and mentoring support. Industry leaders are encouraged to consider education and training as an integral reward and encouragement for employees.

The Mission to Seafarers looks forward to welcoming many new visitors to the centre as they engage with *Maritime Corridor* and are encouraged to make use of the MTSV facilities for social and educational events.

Lloyd's List DCN Introduces the Seafarers Welfare Award

The MTSV is thrilled to announce the introduction of the *Seafarers' Welfare Award*, a new addition to the prestigious Australian Shipping Awards hosted by Lloyds List DCN and inspired following our invitation to attend the awards night last year.

There are 13 award categories however this new award will specifically recognise companies who provide a duty of care and support via their Corporate Social Responsibility programs for seafarers' welfare.

This is an exciting initiative that will be of great benefit to welfare service providers and raise the profile for seafarers' welfare within the broader shipping community.



When Father Ken called, Archbishop Philip Freier came and saw

Archbishop Philip Freier amid good company. Thanks to all who attended. MTSV State Council Chairman Andrew Oddy, Vice Chair Nigel Porteous, State Council Members: Alan Knott, Bill Romney & Rob Springall; Port Chaplain Ken Cahill; Ship Visiting Volunteers Irene and John; MTSV Volunteers Charlie, Bridget, Max and Alf; Chairman MPWA Jim Beggs; MPWA Committee Members: Matt Purcell ITF, Di Magee ANL & Sean O'Neil AMSA

The Archbishop of Melbourne, Dr. Philip Freier and President of Mission to Seafarers Victoria, recently paid the inaugural visit to the Mission building to acquaint himself with our work.

Dr. Philip Freier was appointed as the Archbishop of Melbourne in 2006. His repertoire of success and experience in particular with indigenous culture is very impressive and his empathy for seafarers' welfare was shared on the day.

MTSV Chairman Andrew Oddy, Father Ken, volunteers and friends enjoyed a tour of the Port with the Archbishop after lunch, and were all left to wonder whether seafarers might one day have the VIP treatment experienced by those working in the airline business.

Until then ship crew conditions, in comparison to the airlines, are a long way behind. It is a good analogy which was raised by the Archbishop during his visit.

A Friendly Place for a Friendly Face

State Council Member Bill Romney opened the doors of the Melbourne Flying Angel Club at 10am and shortly afterward, Bosun Antonio Nuguit arrived from the *E.R. Wilhelmshaven*, having just come from a dental appointment.

Antonio hails from Manila and has been at sea for 21 years. Bill helped Antonio to download the images onto the computer to email to his wife and during the days conversations via phone and internet Bill was introduced to Antonio's wife on webcam.

This seafarer travels a 42 day Melbourne to Melbourne route via Sydney, Tauranga (NZ), Fiji, San Francisco, Los Angeles and Auckland. He shared with Bill his anxiety between opportunities to call his family.

Antonio explained how in the earlier days seafarers would have to wait for an agent to bring mail to the ship at the various ports.

Antonio looks forward to coming to Melbourne with its "friendly atmosphere and people". Antonio was still happily using the internet at 6pm that evening when Bill was heading home.



Seafarer Bosun Antonio Nuguit contacts home

What's been happening in Portland

Portland Manager,
Neville Manson,
reports

Despite economic downturn, our team is kept busy

The world economic downturn has impacted on export shipping from Portland with several vessel arrivals cancelled and has also seen delays in the development of the new multi-million dollar woodchip storage facility.

Whilst things are slowing down, the Portland team has been busy.

A Bangladesh seafarer, injured two days prior to his vessel arriving in port, with only aspirin for pain relief, was glad of assistance which saw him transported for examination then taken to Mt Gambier Hospital for surgery. His leg was badly broken, and required pinning, plus an external brace and screws.

Here at Portland we made hospital visits, provided phone cards, clothing, money and an entertaining day trip which relieved some suffering for this seafarer during his ordeal.

His 4 day recuperation following the operation saw him stay with one of our volunteers and he was then well enough to be delivered safely to Melbourne airport for his flight home.

A member of the Burmese community was contacted and was able to meet him while waiting at the airport for his flight, a long 12 hour wait!

Communication facilities well utilised ... what's next at Portland

Portland has purchased 3 second-hand computers from the Heywood Secondary College; all are now up and working with web cams etc. totalling 5 computers, now all of which keep very busy.

Further to this, the new local call access numbers offered at Portland give improved value when calling overseas.

The next goal the Portland team has is to raise \$7,000 to replace a fence at the old Mission building.

Anyone with fencing contacts that might provide a better quote please contact Neville at the Portland centre.

*Happy to be
contacting home,
additional
computers now in
good use at
Portland*

Another Crew Safely on their Way

Having recent memories of the *Malakov* saga, a similar vessel arrived in the bay recently with a familiar story for the Portland team. The vessel *Turaman* had been towing another vessel between NZ & Australia en-route to India to be scrapped. During the voyage from New Zealand, the towed vessel had apparently sunk in rough sea and the tow abandoned. Subsequently *The Turaman* had also broken down and had then moored then in the bay at Portland whilst repairs were undertaken. Thankfully after three days of repairs were completed, the vessel was able to continue her voyage with all crew on board in good health and spirits. The Portland Mission was able to offer some basic supplies, treats & phone cards for the crew. We received a message of thanks from the owners and the crew after the vessel's departure.



Melbourne Open House – Sunday 19th July



Melbourne Open House Day will see thousands of visitors through the streets of Melbourne to explore the architecture, innovation, history and intrigue of various Melbourne buildings. The 717 Flinders will be featured on the day. Melbourne centre Volunteers, Bridgit Sutherland and Michael

Little have been instrumental with Janet Gatehouse, (State Council) to see the big day a great success. Visitors to the centre will receive a guided tour, great food, information on the building's architecture, and an insight into the maritime history in the Port of Melbourne.

Aged with grace, and then had a face lift – why not?...

With very special thanks to the Helen Macpherson Smith Trust and Myer Foundation our kitchen at 717 Flinders retains its charm, character and heritage grace but is now commercial in operation!

Please make good use of this venue, bring your own chef or ask for our list of caterers. Utilise the private dining room and courtyard for functions, events or seminars.

We are located in the heart of the Melbourne CBD, World Trade Centre and Docklands precinct. St Peter the Mariner Chapel with its stained glass windows and age-old timber interiors is a unique and romantic venue for weddings and celebrations.

This is called 'word of mouth marketing' please pass the word that the MTSV Melbourne centre at Docklands offers boutique corporate and private functions facilities.

Discussion with a Ship's Master

*By Bridget Sutherland, MTS
Volunteer - Melbourne*

In March this year a Ship's Master visited the Mission and we had the most informative discussion about the problems currently facing the shipping industry.

From his perspective they could be summarised as follows.

He said today's shipping companies want complete control. Everything has to be logged and reported on a daily basis. As Master, this places him under a great deal of stress.

There also seems to a lack of understanding by the companies of the prevailing economic conditions. Their demands can also be very petty, for example, no more paper to be supplied

to the crew. I managed to make him laugh by suggesting that perhaps toilet paper might be the next item to go!

My maternal grandfather, the Reverend Henry Haworth Coryton, after spending most of WWI as Chaplain at the Mission to Seamen in Rotterdam, was appointed General Superintendent of the Mission from 1922-1931. Grandpa was passionate about the Mission and caring for seafarers.

Today, Australia depends on ships for its wealth. For their safe and efficient service, ships depend on seafarers who are often away from their homes and families for many months, often working in hard and dangerous conditions.

I am proud to be carrying on a family tradition, albeit in Australia.

Ship to Shore

Published by Mission to Seafarers
Victoria

Editor: Terry Heat h

Any comments, suggestions, or
material for inclusion to:

andrea@missiontoseafarers.com.au

Membership Enquiries and Change
of Address to
Honorary Secretary – Alan Knott,
Mission to Seafarers Vic.
717 Flinders Street Docklands VIC
3008
T: 03 9629 7083
F: 03 9629 8450

Pledge Partners

Rio Tinto



Supporters



Event & Appeal Sponsors



Pledge Partnerships & Corporate Supporters, thank YOU

The Mission to Seafarers Victoria acknowledges the ongoing support in particular this year, of our supporters. This edition of Ship to Shore was edited and proof-read by Terry Heath, who is a member of the Anglican Men's Society, long-time supporters of the Mission. Terry and other A.M.S. members collect bibles in a variety of versions and languages as give-aways to visiting seafarers. Terry does his editing work on a pro-bono basis and also provides similar service to Prison Fellowship and B.C.A. Contact the Mission for Terry's details.

Yes, I want to help

I / We would like to make a donation of: \$.....

- One-off Donation
- Monthly
- Quarterly
- Annual

(Please tick appropriate box)

Payment is made by: Cheque / Money Order, made payable to: Seafarers Welfare Fund or Credit Card – details below

Please debit my credit card MasterCard Visa

_____ / _____ / _____ / ____.

Expiry Date: /

Name on Card: _____

Signature: _____

Please send my receipt to:

Mr / Mrs / Ms _____

Other: _____

Name: _____

Address: _____

Suburb: _____ State: _____

Postcode: _____

Become a member of the Mission to Seafarers' Victoria

WATCH THIS SPACE - Membership Benefits are growing....

Annual Subscription to Ship to Shore

10% off hire of MTSV facilities for corporate and private seminars and functions

All Members are invited annually to gather for the Annual General Meeting and luncheon.

Have your say, The Mission to Seafarers is interested to hear your views, thoughts and experience of seafaring and seafarers' welfare.

Membership Subscription until January 1st 2010 is just \$10.

Include your name and address, phone and or email address.

If you have time please write and tell us about your own thoughts on seafaring. Please send your letter and subscription by Cheque / Visa / MasterCard remember to include the expiry date and post to Alan Knott, Secretary Mission to Seafarers Victoria thank you.

Seafarers' Centres

Geelong

MtS Flying Angel Club
7 The Esplanade
North Shore 3214
Tel/Fax (03) 5278 6985

Hastings

Bayview Road
(PO Box 209)
Hastings 3915

Tel: (03) 5979 4327
Fax: (03) 5979 4676

Portland

PO Box 538
Portland 3305
Tel: (03) 5523 2776
Fax: (03) 5523 5590

Melbourne

MtS Flying Angel Club
717 Flinders Street
Melbourne 3005
Tel: (03) 9629 7083
Fax: (03) 9629 8450

www.missiontoseafarers.com.au